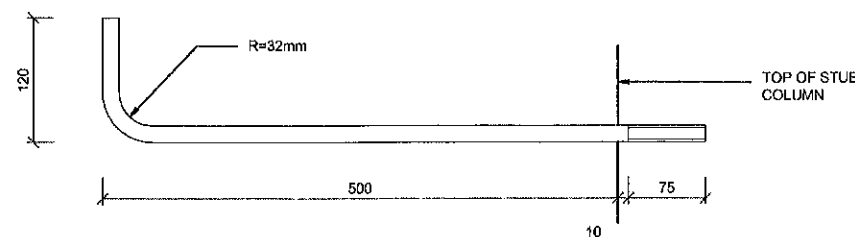
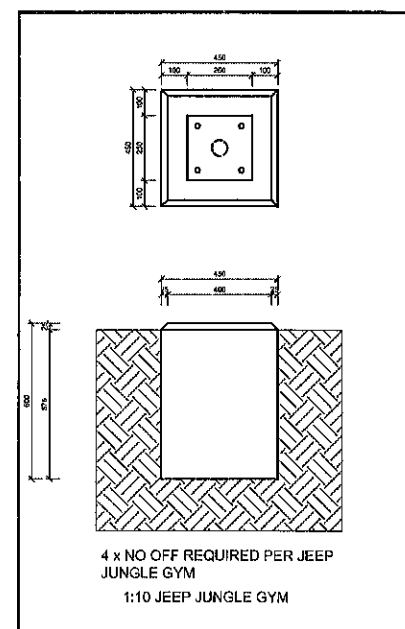
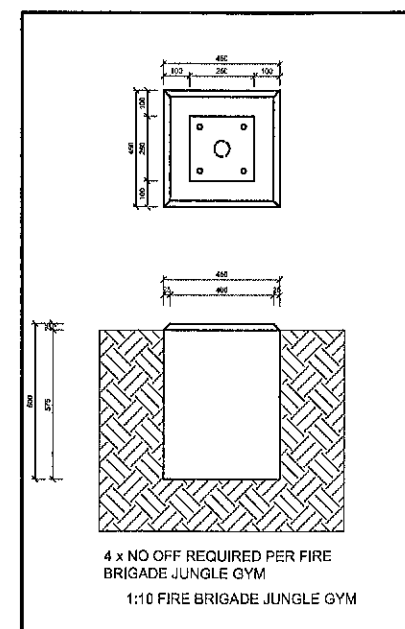
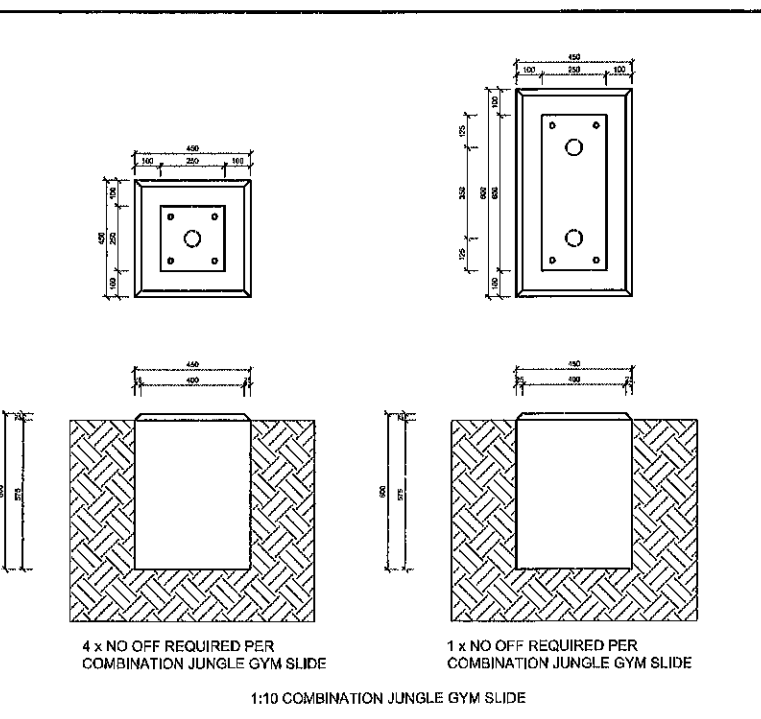
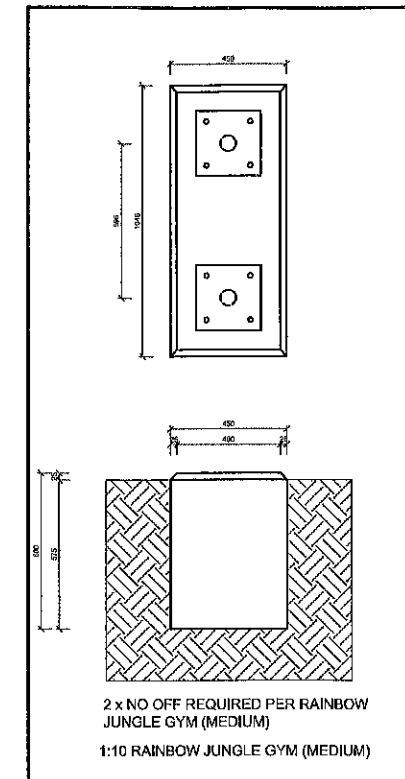
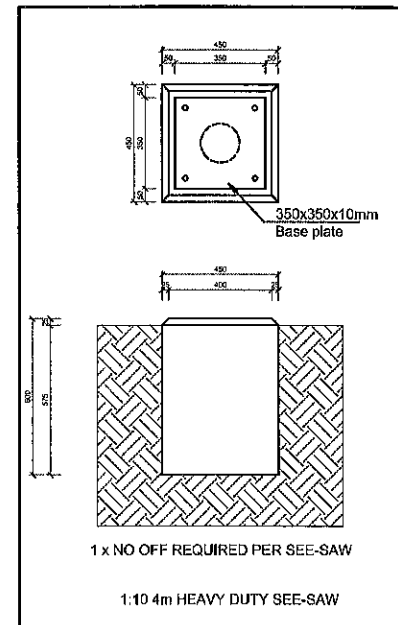
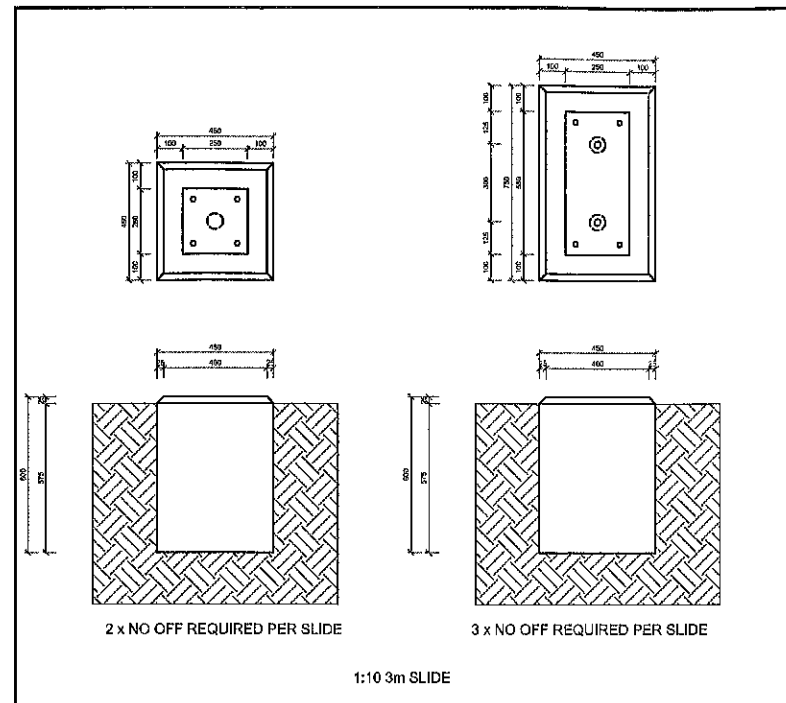
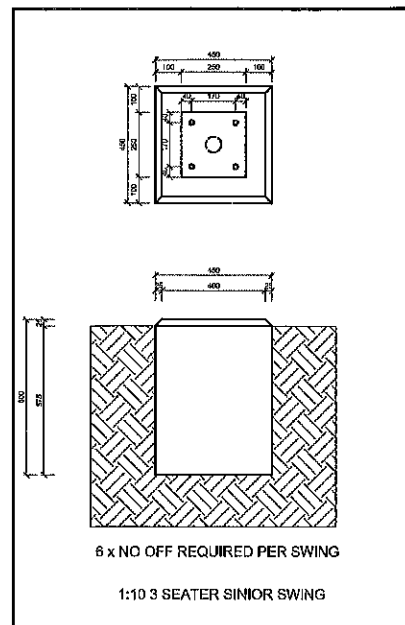
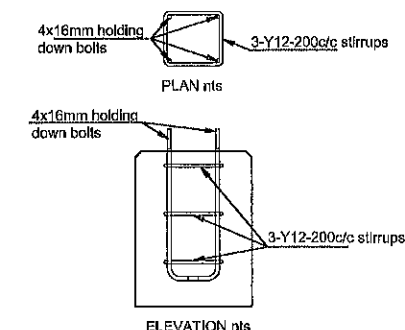


ANNEXURE B



NOTES:

- 1) All holding down bolts to be 16mm diameter and 600mm long.
- 2) All holding down bolts to be welded up in a cage using 3Y12 stirrups.
- 3) All bolt holes to be 18mm and hole centers to be 40mm from plate edge.
- 4) All base plates to be 6mm unless otherwise stated on drawing.
- 5) Concrete to be 25 MPa
- 6) Top of bases to have 25mm chamfer.



GENERAL:

1. THIS DRAWING MUST BE READ WITH THE ARCHITECTURAL DRAWINGS. ANY DISCREPANCIES TO BE REPORTED TO ARCHITECT AND ENGINEER.
2. ALL DIMENSIONS AND LEVELS TO BE VERIFIED ON SITE.
3. ALL MATERIALS AND WORKMANSHIP TO BE IN ACCORDANCE WITH THE RELEVANT CLAUSES OF SABS 1200.
4. NOTWITHSTANDING THE FACT THAT OVERBERG CONSULTING ENGINEERS WISHES TO INSPECT THE FOUNDING CONDITIONS, FIXING OF REINFORCING ETC. THE RESPONSIBILITY FOR WORKMANSHIP ACCORDING TO THE DRAWINGS AND SPECIFICATIONS REMAINS WITH THE CONTRACTOR.

FOUNDATIONS:

5. ALL SPOT FOOTINGS TO BE CAST ON A 50mm BLINDING LAYER (15 mPa) WHERE APPLICABLE.
6. FOUNDATIONS ARE DESIGNED FOR A GROUND BEARING CAPACITY OF 100 kPa. FOUNDING CONDITIONS ARE TO BE CHECKED AND APPROVED BY OVERBERG CONSULTING ENGINEERS PRIOR TO CASTING.

REINFORCED CONCRETE:

7. ALL REINFORCED CONCRETE TO BE 25/19.
8. ALL REINFORCED CONCRETE TO BE MECHANICALLY VIBRATED.
9. ALL REINFORCEMENT TO BE CHECKED AND APPROVED BY OVERBERG CONSULTING ENGINEERS PRIOR TO CASTING.
10. COVER TO REINFORCEMENT TO BE AS FOLLOWS -

FOUNDATIONS	- 75mm
COLUMNS	- 30mm
BEAMS	- 30mm
SLABS	- 30mm
RETAINING WALLS	- 50mm

NOTE: ENSURE COVER BLOCKS OF PLASTIC TYPE OR SIMILAR APPROVED.

11. ALL CONCRETE TO BE MOIST CURED FOR 4 DAYS (MIN.) AFTER POURING.

12. SIX TEST CUBES TO BE MADE OF EACH POUR, 3 FOR TESTING AT 7 DAYS AND 3 FOR TESTING AT 28 DAYS IF NECESSARY.

13. REINFORCED CONCRETE ELEMENTS TO BE PROPPED AS FOLLOWS:

BEAMS - 14 DAYS
SLABS - 10 DAYS
BACKPROPS FOR MIN 7 DAYS AFTER STRIPPING

No.	Date	Revision	Initial

UNITRADE 1211 CC trading as
OVERBERG CONSULTING ENGINEERS

7 MAGNOLIA STREET
NORTH CLIFF
HERMANUS
7200

TEL: 028 313 2620
CEL: 082 902 4345
083 325 9830
FAX: 028 313 2500

Client
OVERSTRAND MUNICIPALITY

Project
BASES FOR PLAYGROUND EQUIPMENT

Drawing description
BASE AND HOLDING DOWN BOLT DETAILS

Drawn by I.W. Date 06/11/15
Checked by I.W.
Scale as shown

Drawing No. H3275-01